



Mastery Teaching Workshop

with John D. Mays

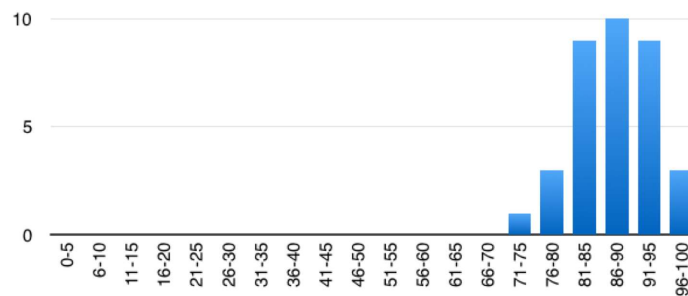
Lesson 13: Analysis of Student Performance, Pt. 1

Outline:

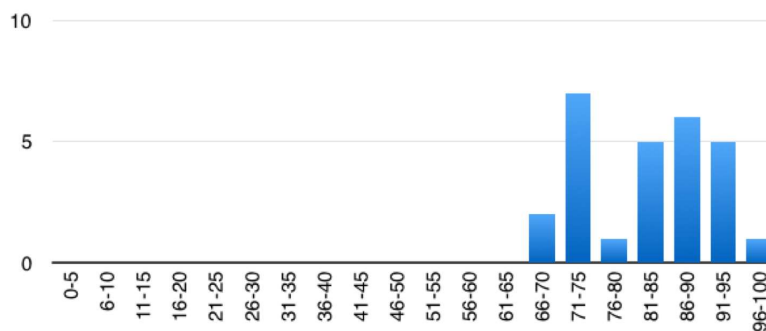
Learn Master Retain Cycle

Quiz Score Bar Charts

- Typical distribution for well-functioning class in a mastery environment.
 - The number of students making a “C” goes to zero.
 - Almost all students will score an “A” or a “B”.



- Bimodal distribution - some students not keeping up?
 - This performance should raise concerns in your mind.
 - You can look over quizzes to check on why you had such a distribution.
 - There could be a group of students who did not master the new material.





- Quiz Results for the first five weekly quizzes
 - Poor math skills are evident.
 - Improper placement may be indicated.
 - Some indication of overall progress
 - By week five things have improved a lot.
- Tracking individuals – November woes evident
 - This doesn't need to be done for a student who is doing well.
 - This can be helpful for communicating with parents when things start to go poorly. This raises the question of what is going on.
 - The student is not doing the review on the weekly review guide.
 - If this happens with a large portion of the class, they are not studying properly. It is crucial that each student needs to work through the material on the weekly review guides.
 - If you improve your studying, it takes about three weeks for the grade to improve.
- Tracking class average – dip at “A”: Grade replacement quiz time?

